






# Hubbard County, MN Water Table Sensitivity





Water Table Aquifer Sensitivity based on Sediment Association of MN Geomorphology (DNR, UMD, MGS 1997) and Sand and Gravel layer (MGS)

## Landscape Features

-  Major Roads
-  100k Steams and Rivers (USGS)
-  DWSMA (MDH)
-  100k Lakes (DNR)
-  Townships

## Water Table Aquifer Sensitivity

### Rating

-  No Rating
-  Low
-  Medium
-  High

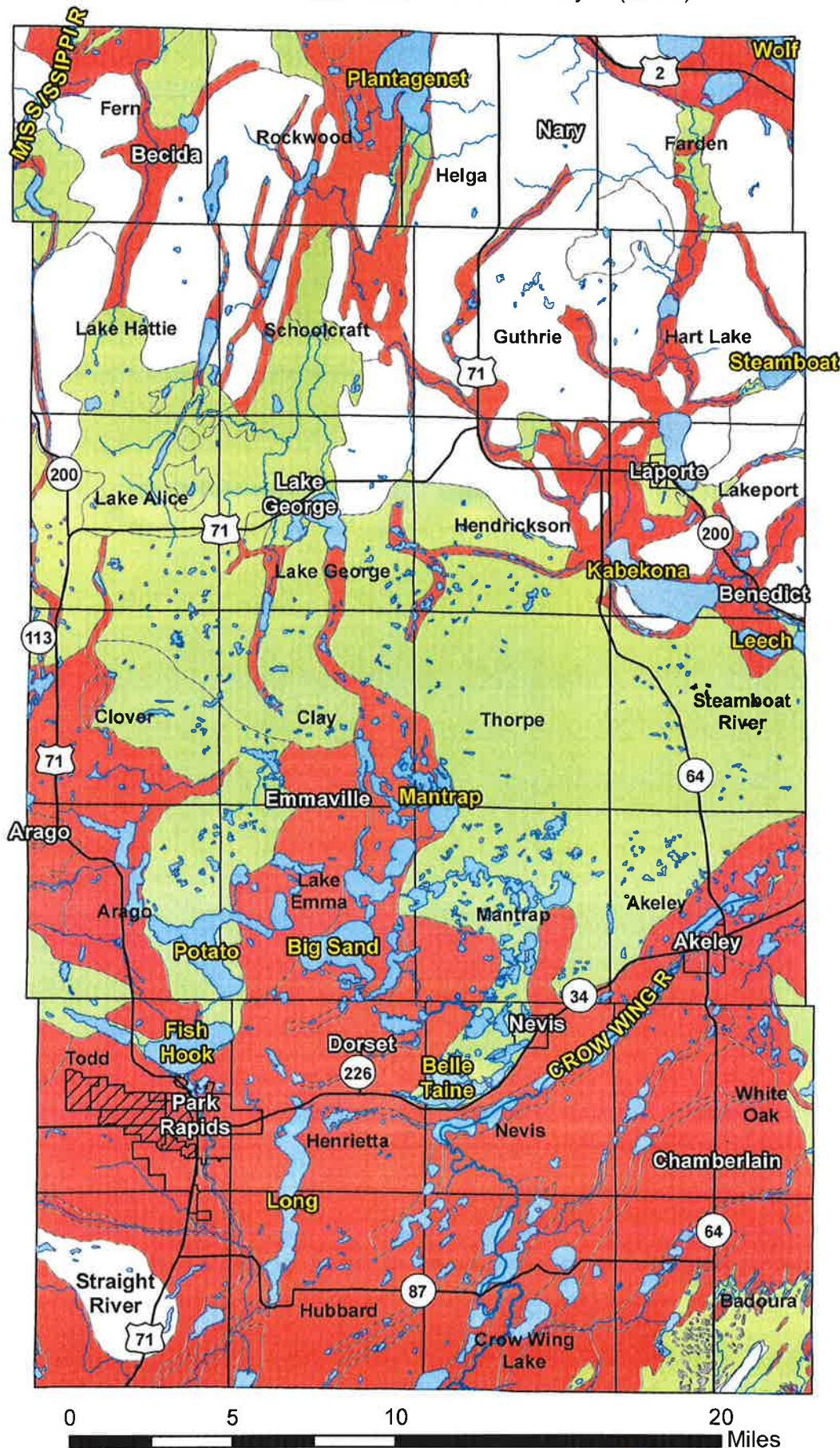
### City

**Major waterbody**

Township name

## Minnesota Counties

 Hubbard



0 5 10 20 Miles