

One Water One Plan Leech Lake River Watershed Fact Sheet

March 1, 2018



The Leech Lake River Watershed is in the heart of Minnesota’s premier lake country and contains many pristine natural resources. Here are some highlights of this watershed:

- 1,335 square miles in the northern part of the Upper Mississippi River Basin
- 277 river miles and over 750 lakes
- The forests, lakes, streams, and wetlands support an abundant amount of fish and wildlife habitat
- It provides a substantial amount of clean drinking water for communities downstream along Mississippi River including St. Cloud, Minneapolis, and St. Paul.

What is the Leech Lake River One Watershed One Plan (LLR1W1P)?

An implementation plan that aligns with local water planning on major watershed boundaries with strategies that work toward prioritized, targeted, and measurable goals. The implementation plan prioritizes cost effective activities that address the largest threats in the watershed and provide multiple benefits for the environment.

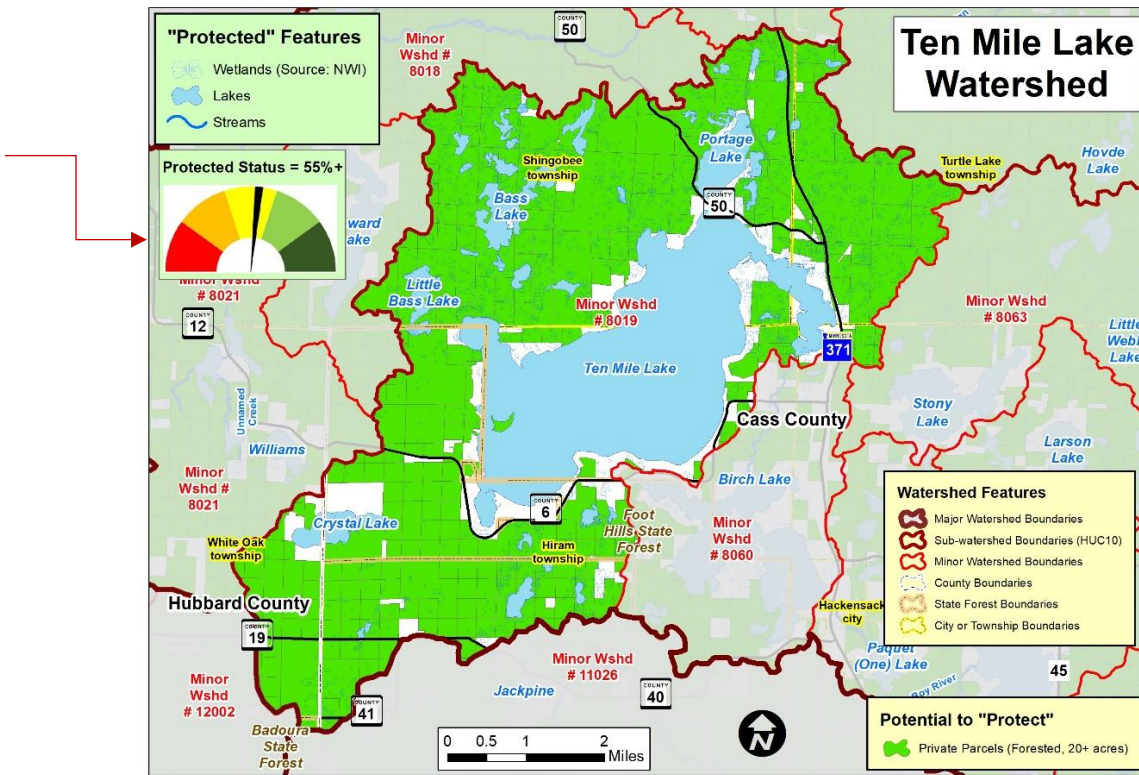
The vision statement of the LLR1W1P is:

“Woods, water, wildlife, and people; a healthy watershed that supports a vibrant economy.”

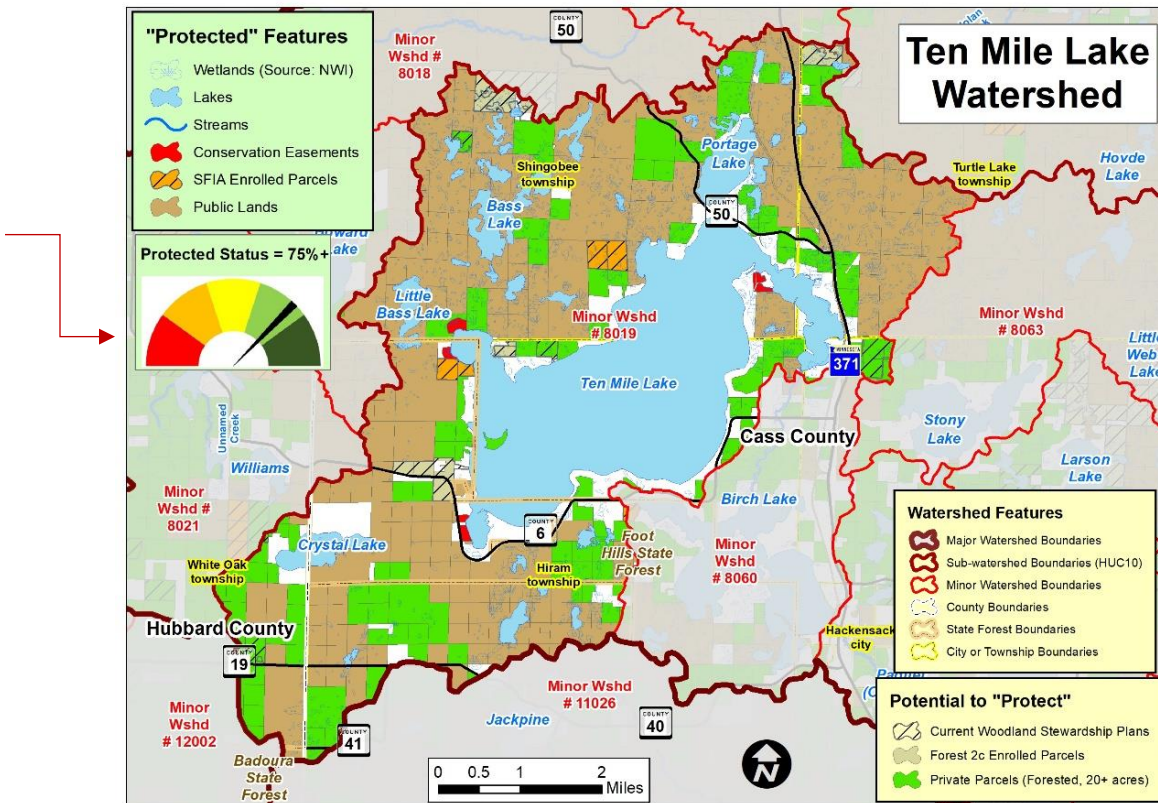


Although these map examples below are minor watersheds, the purpose is to show you that when people work together we can make a difference.

Protection Status of Ten Mile Lake Watershed 20 years ago.



Protection Status of Ten Mile Lake Watershed Today



Imagine the possibilities that could happen if we worked together to protect all the Leech Lake River Watershed!